

# New Orleans to Venice, LA (NOV) Plaquemines Parish Non-Federal Levee IER13 Workshop Meeting

September 19, 2009



US Army Corps of Engineers  
**BUILDING STRONG**®

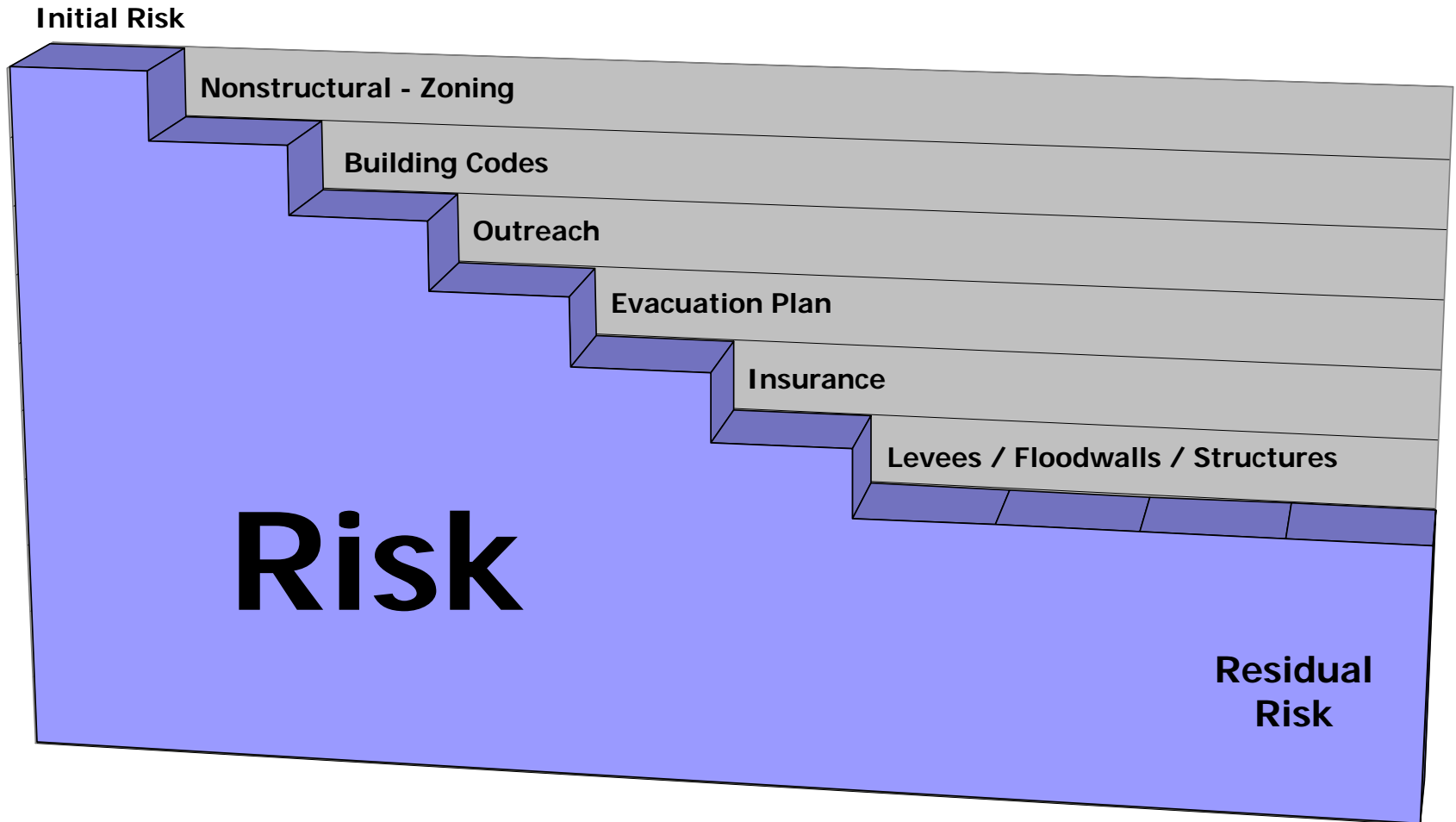
# Agenda

- Welcome and Introductions
- Project Description
- Ongoing Activities
- Schedule
- Questions & Comments

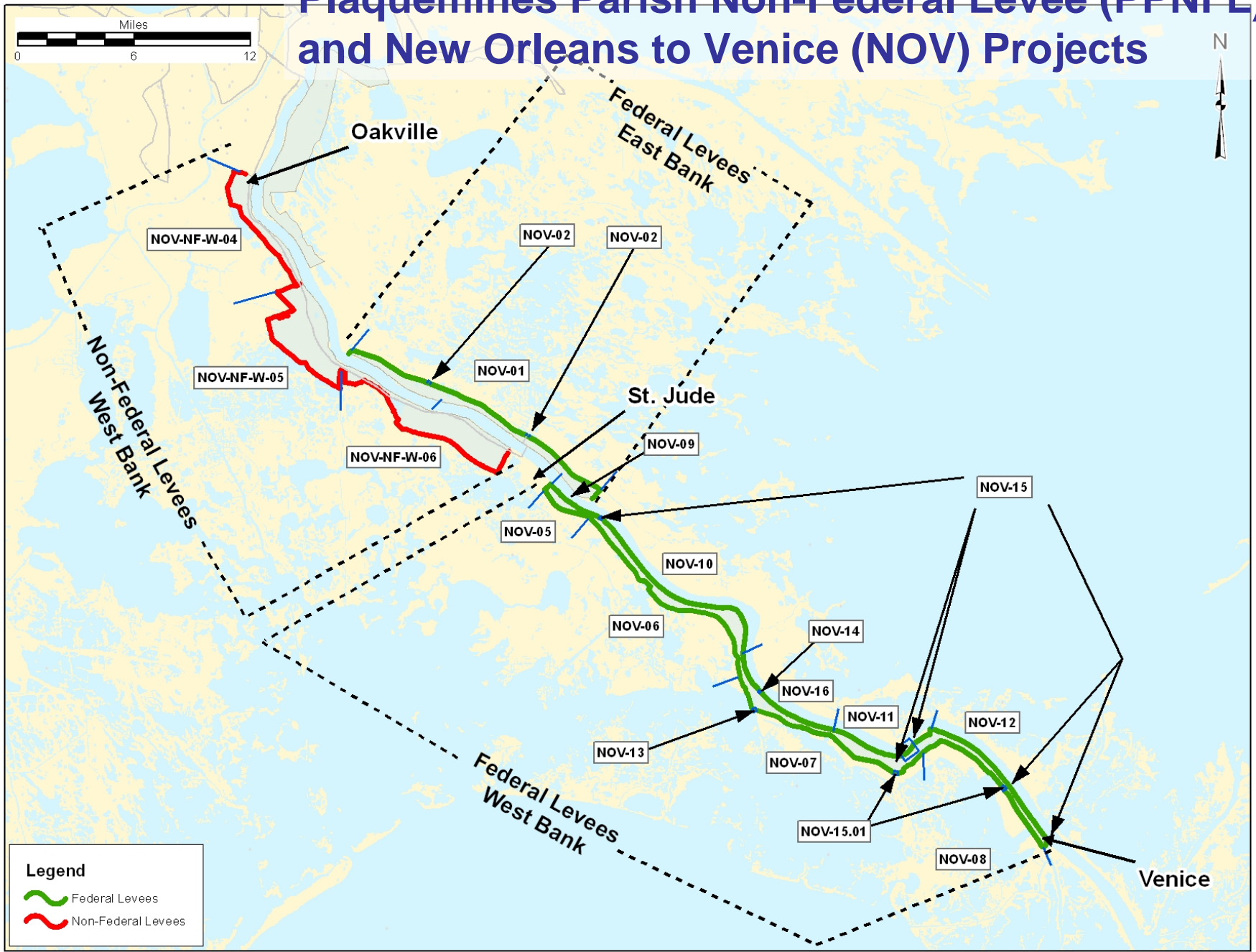
# Subject Matter Experts

- Paul Eagles, Senior Project Manager
- Julie LeBlanc, Senior Project Manager
- Julie Vignes, Senior Project Manager
- Ben Caldwell, Technical Manager
- Ty Wamsley, ERDC Hurricane Specialist
- Larry Marcy, Environmental
- Gib Owen, Environmental

# Buying Down Risk



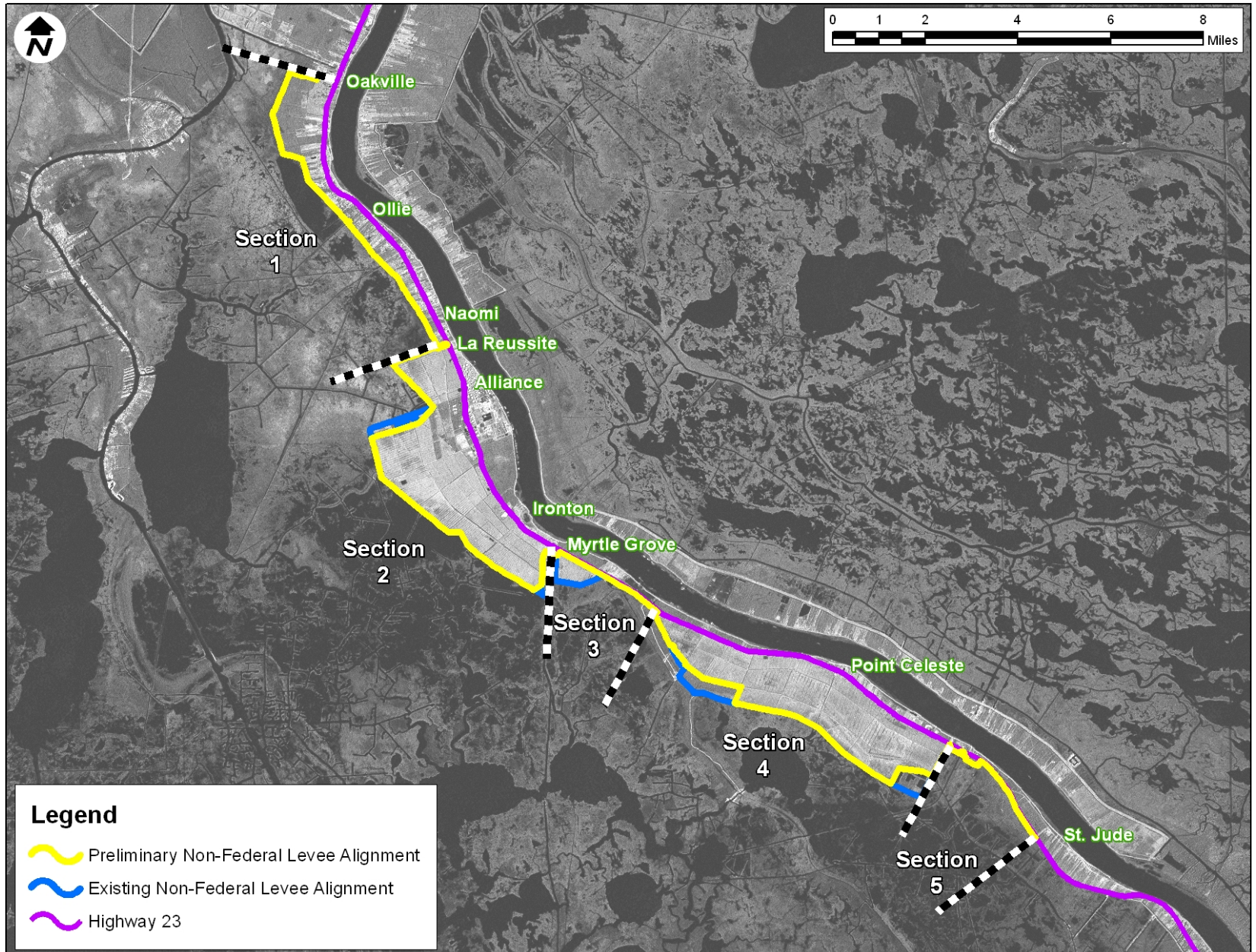
# Plaquemines Parish Non-Federal Levee (PPNFL) and New Orleans to Venice (NOV) Projects



# Non-Federal Levee Project

- Project was authorized and funded in the 4<sup>th</sup> (2006) and 6<sup>th</sup> (2008) Emergency Supplemental Act passed by Congress.
- \$671M is now fully funded to replace or modify 34 miles of existing Non-Federal Levees (NFL) to the Authorized NOV Level of Protection.
- The NFL will be incorporated into the Existing New Orleans to Venice, LA project (NOV).
- Levees will be raised from 2-8 feet depending on location.

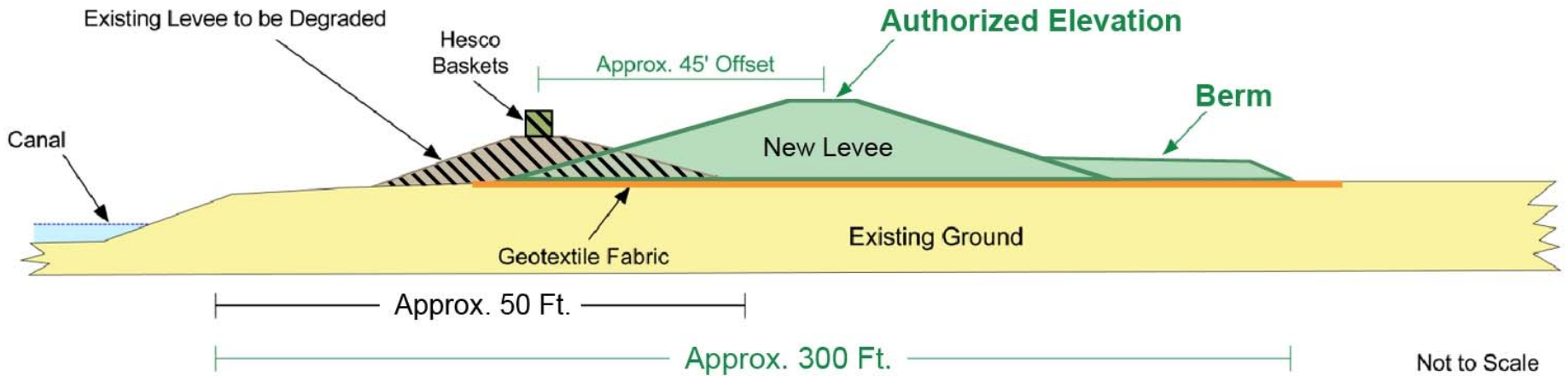
# Plaquemines Parish Non-Federal Levee



# CONCEPTUAL LEVEE SECTION

PROTECTED SIDE

FLOOD SIDE

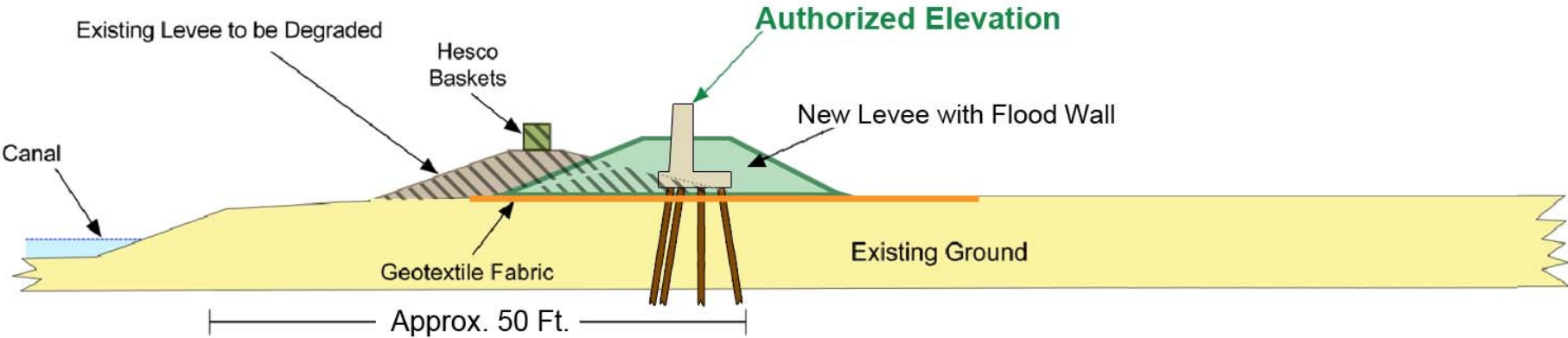




# CONCEPTUAL FLOODWALL SECTION

PROTECTED SIDE

FLOOD SIDE



Not to Scale

# Work Under Way



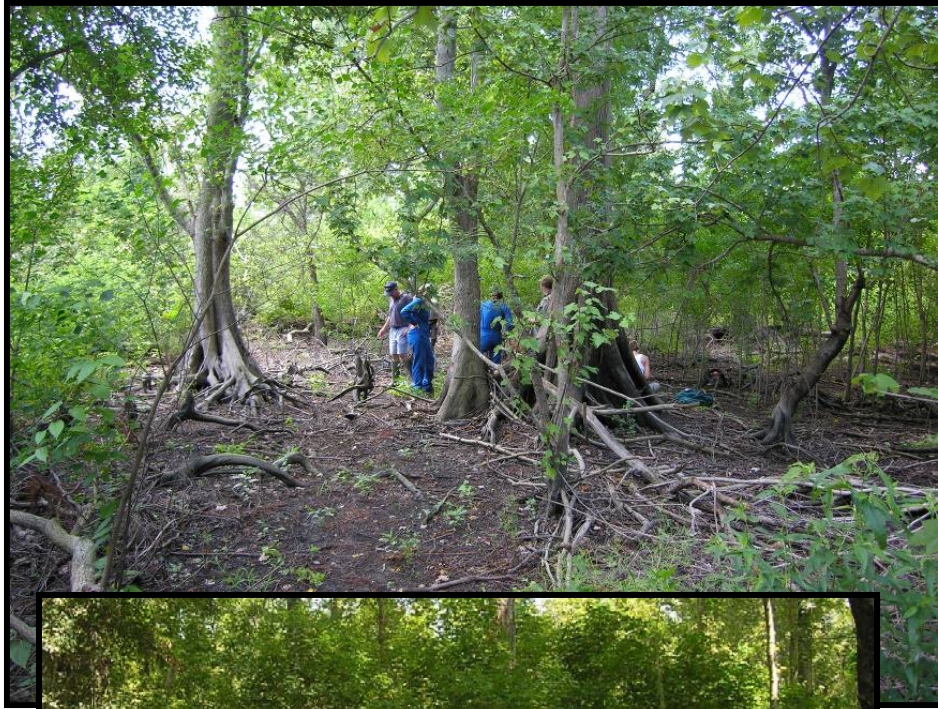
**Soil Boring Rig**

# Work Under Way



**Cone Penetration Test (CPT)  
Mobile Lab For Soil Testing**

# Wetland Assessment



## **Agency Team:**

**Louisiana Department of  
Natural Resource**

**Louisiana Department of  
Wildlife and Fisheries**

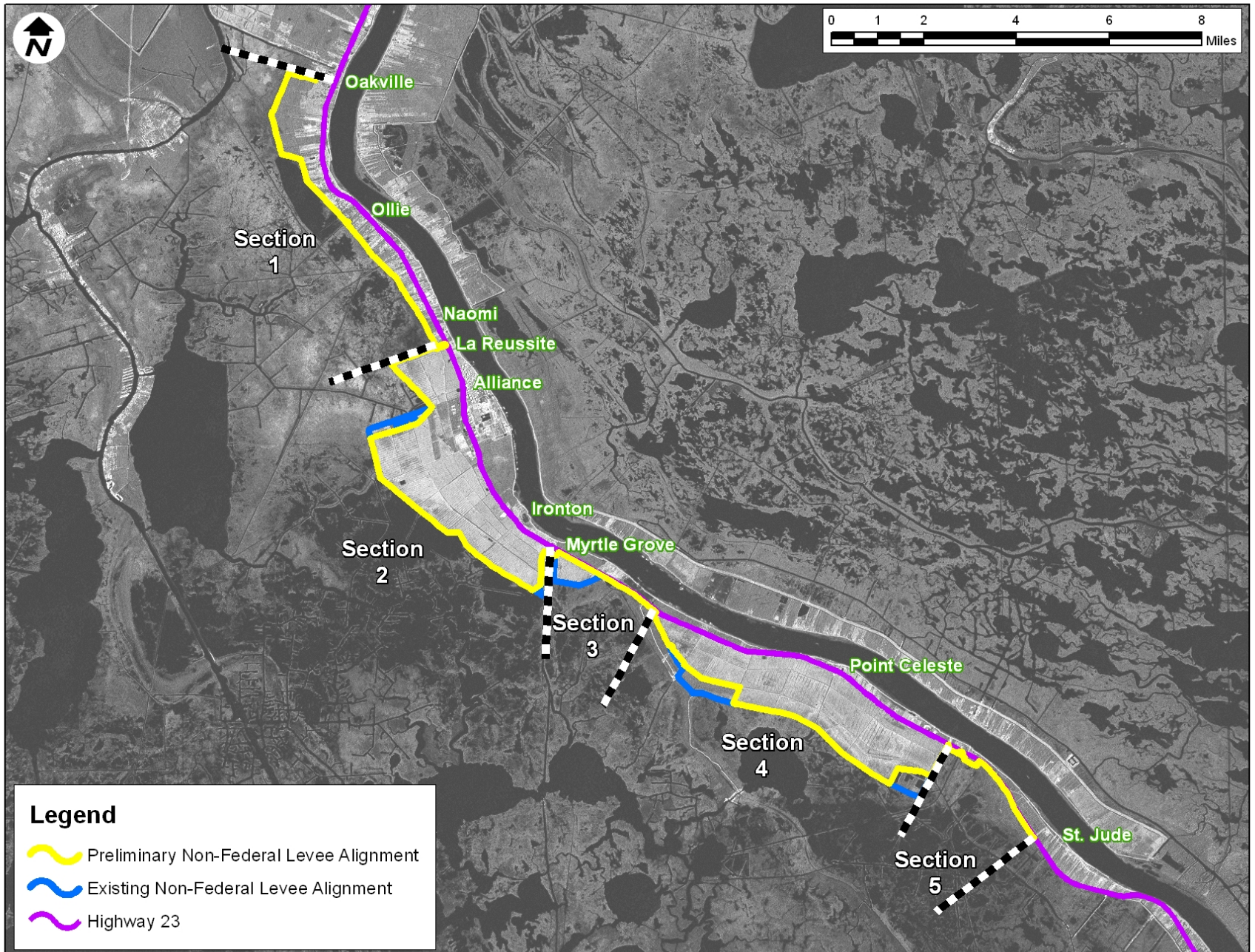
**U.S. Fish and Wildlife Service**

**U.S. Army Corps of Engineers**

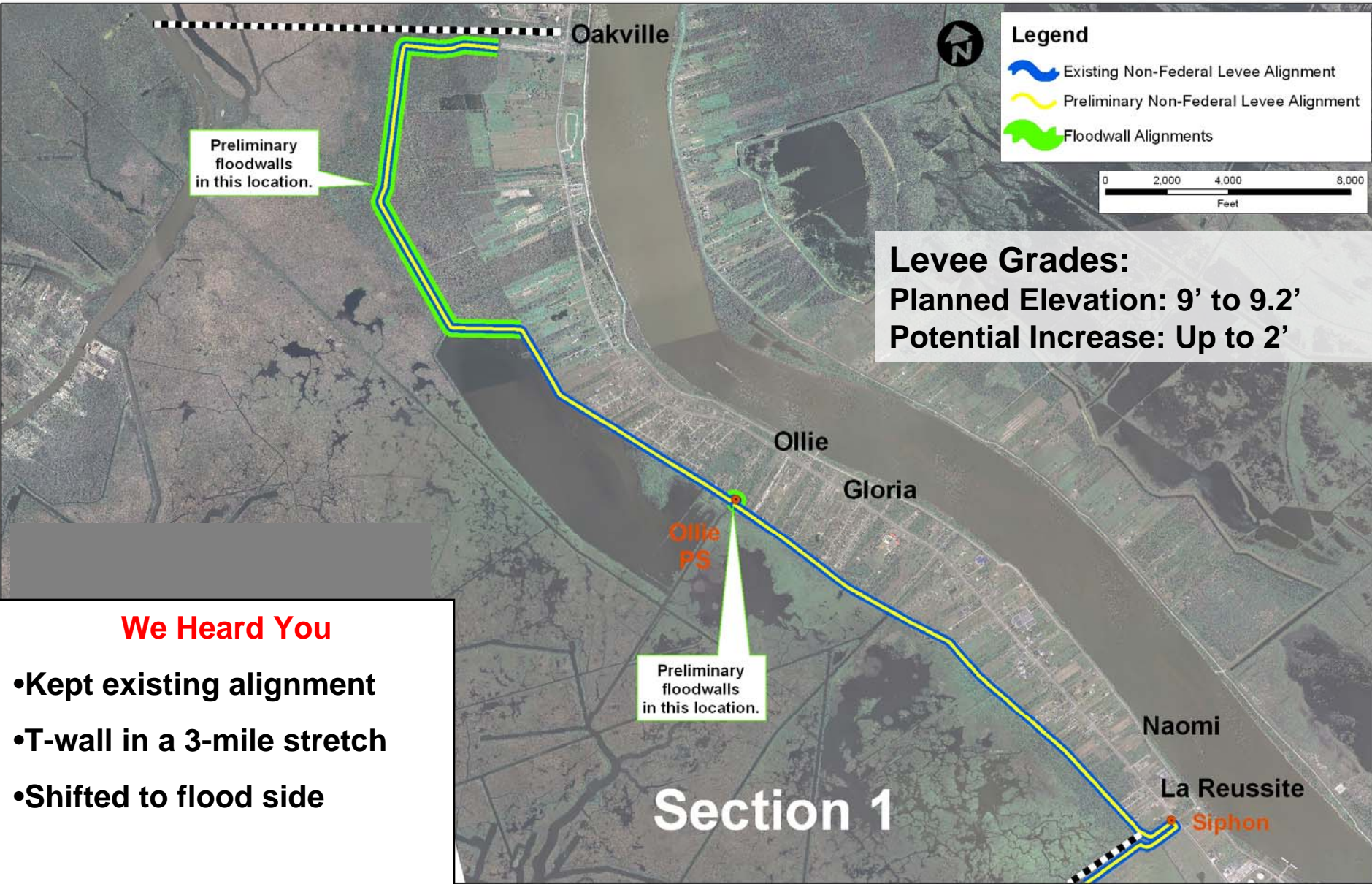
# Estimated Project Schedule

- Public Scoping Meetings Mar 2007
- Progress Update Jan 2009
- Preliminary Levee Alignment May 2009
- Hydraulic Modeling Ongoing
- Geotechnical Analysis/Surveys Ongoing
- Environmental Analysis Ongoing
- **Status Update** **Sep 2009**
- Draft SEIS to Public Nov 2009
- Public Meeting Jan 2010
- Sign Record of Decision Jun 2010
- Plans and Specs Complete Oct 2010
- Advertise First Contract Mar 2011
- Construction Awarded (All Three Contracts) Jun 2011
- Construction Complete (Last Contract) Oct 2013

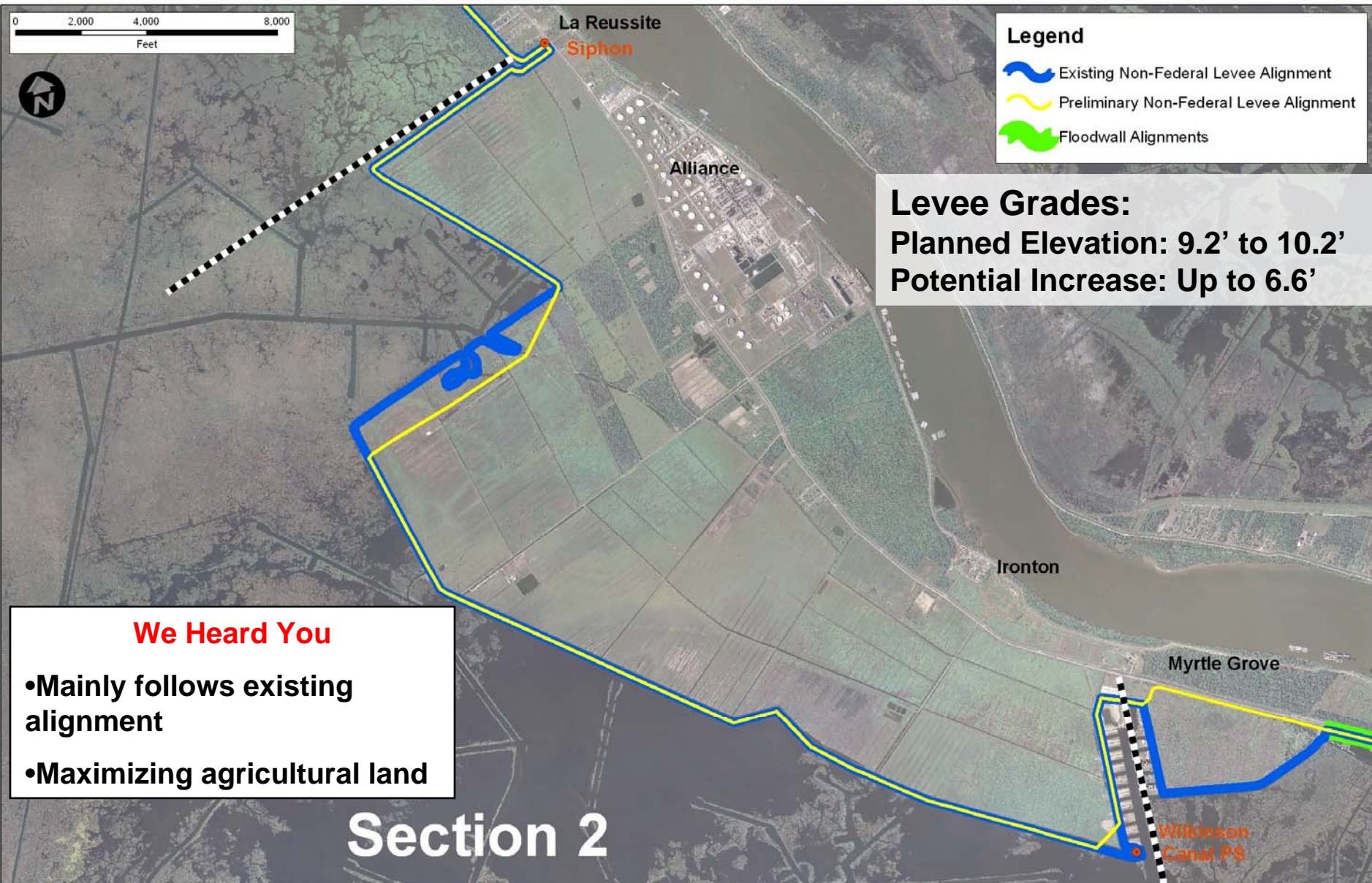
# Plaquemines Parish Non-Federal Levee



# Section 1: Oakville to La Reussite

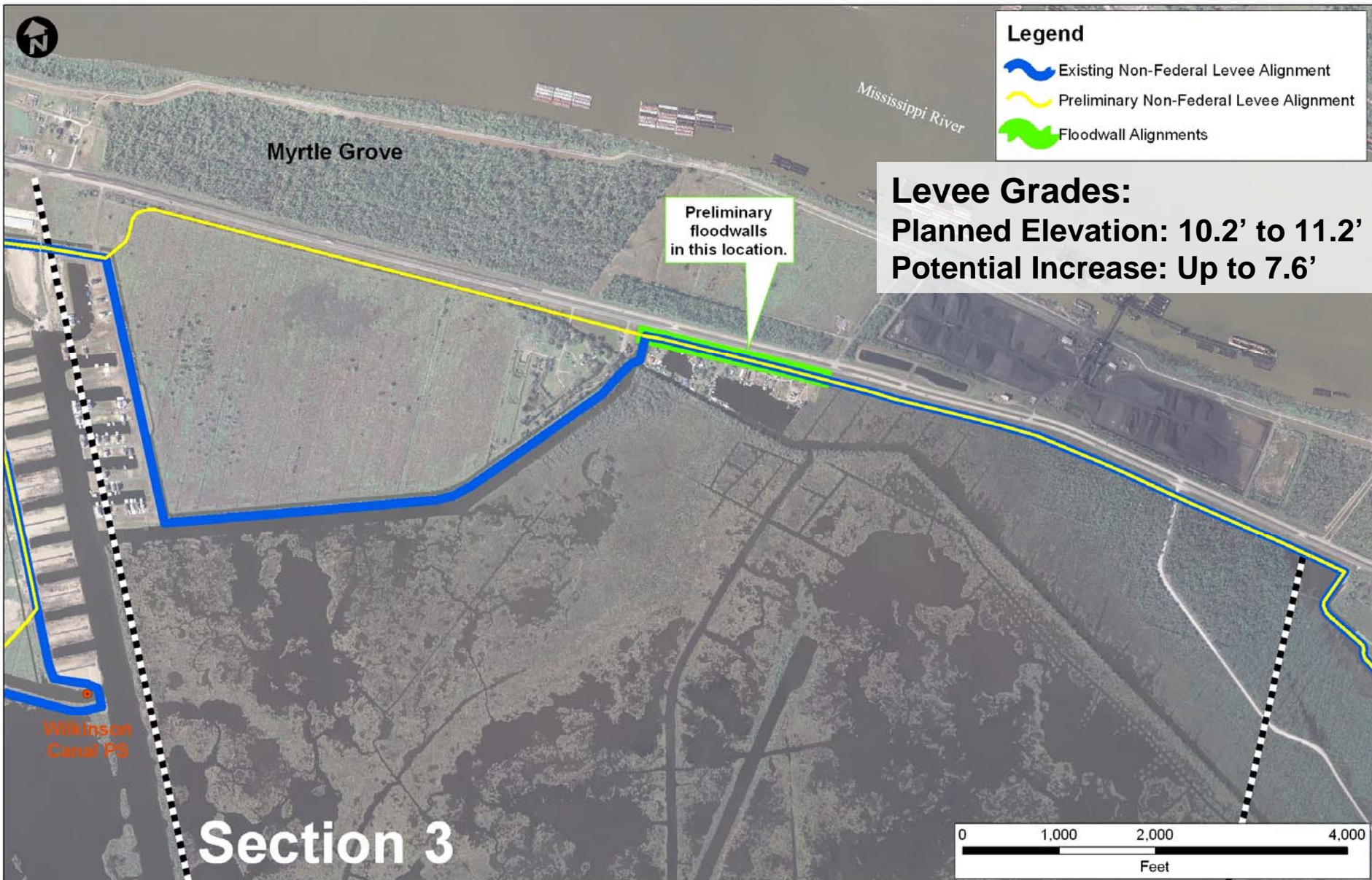


# Section 2: La Reussite to Myrtle Grove

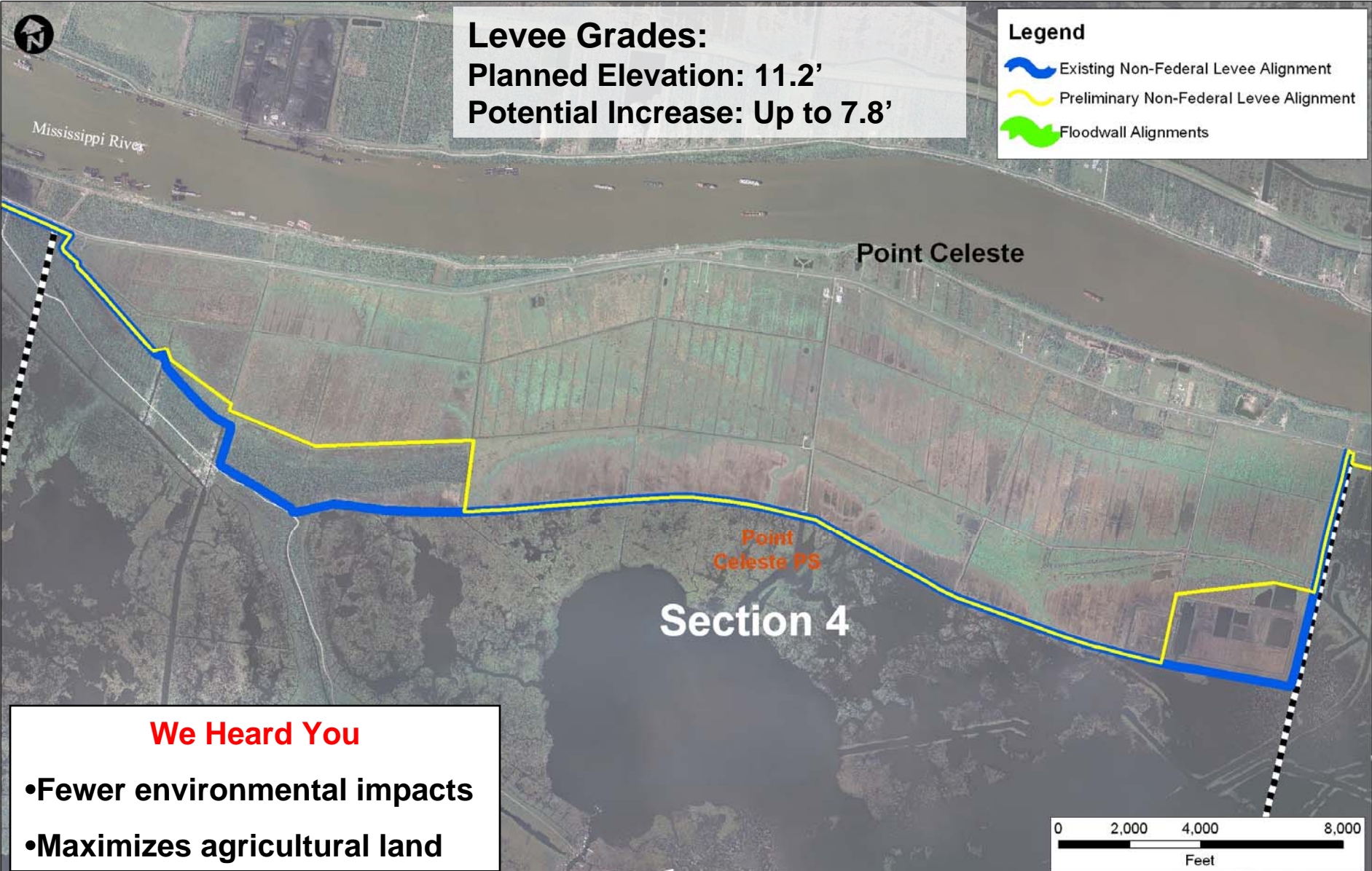




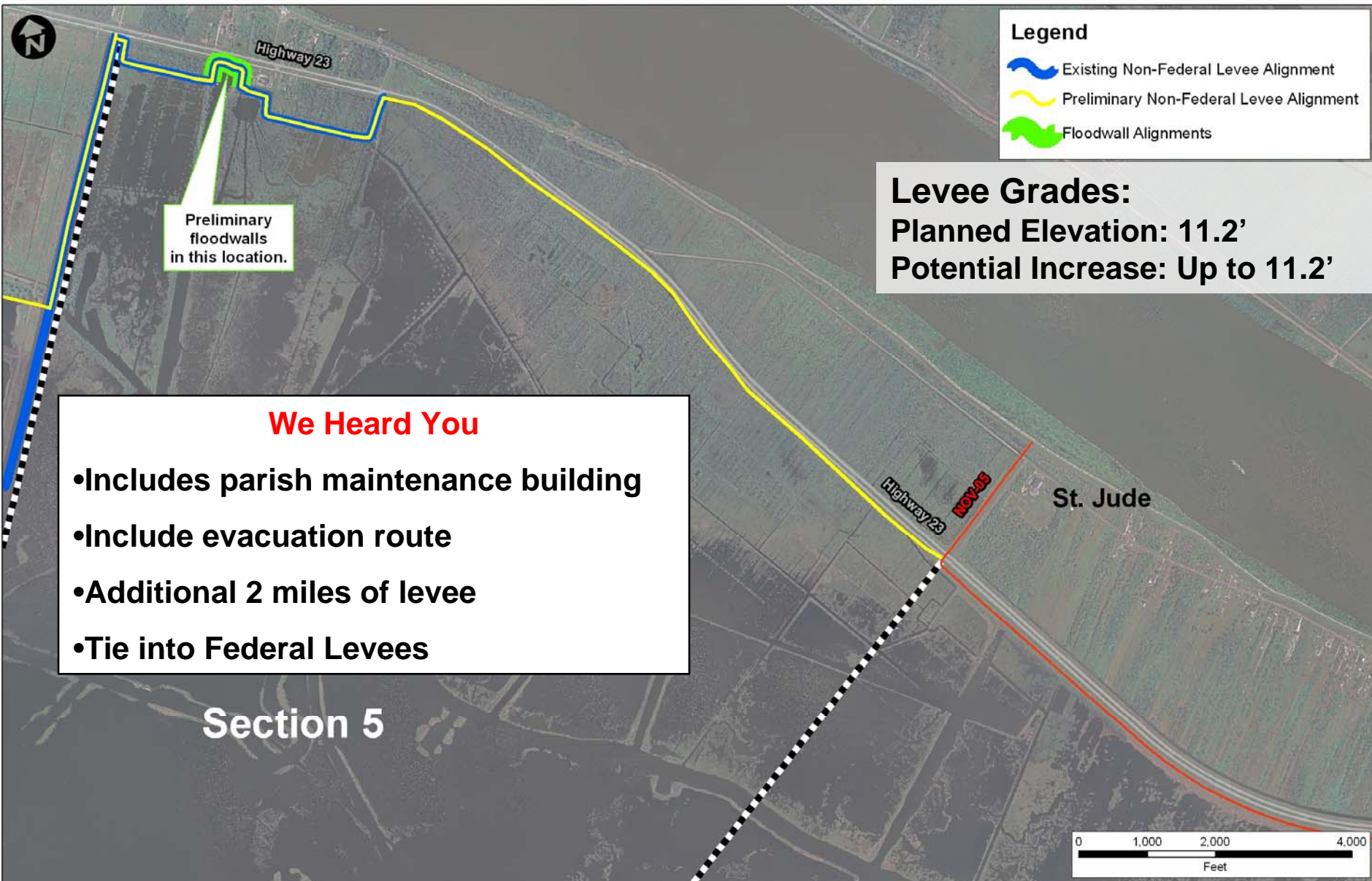
# Section 3: Myrtle Grove to Citrus Lands



# Section 4: Citrus Lands to Point Celeste



# Section 5: Point Celeste to St. Jude



# Questions and Comments

- Please complete a speaker request card
- Use the microphone provided and please provide your name and affiliation
- Limit your questions/comments to 3 minutes
- Written comments will be accepted